

COVERS & CO.

INTERCROPPING

Oats/Vetch For Livestock Forage

COVERS&CO.

SOW OATS UNDERSEEDED WITH VETCH & PRG

- Reduce cost
- Provide a viable winter feed source for cattle
- Keep a living root in the soil
- Grazing
- Forage option for the following year



COVERS&CO.

PRE-SEED HERBICIDE APPLIED

SEEDING RATE:

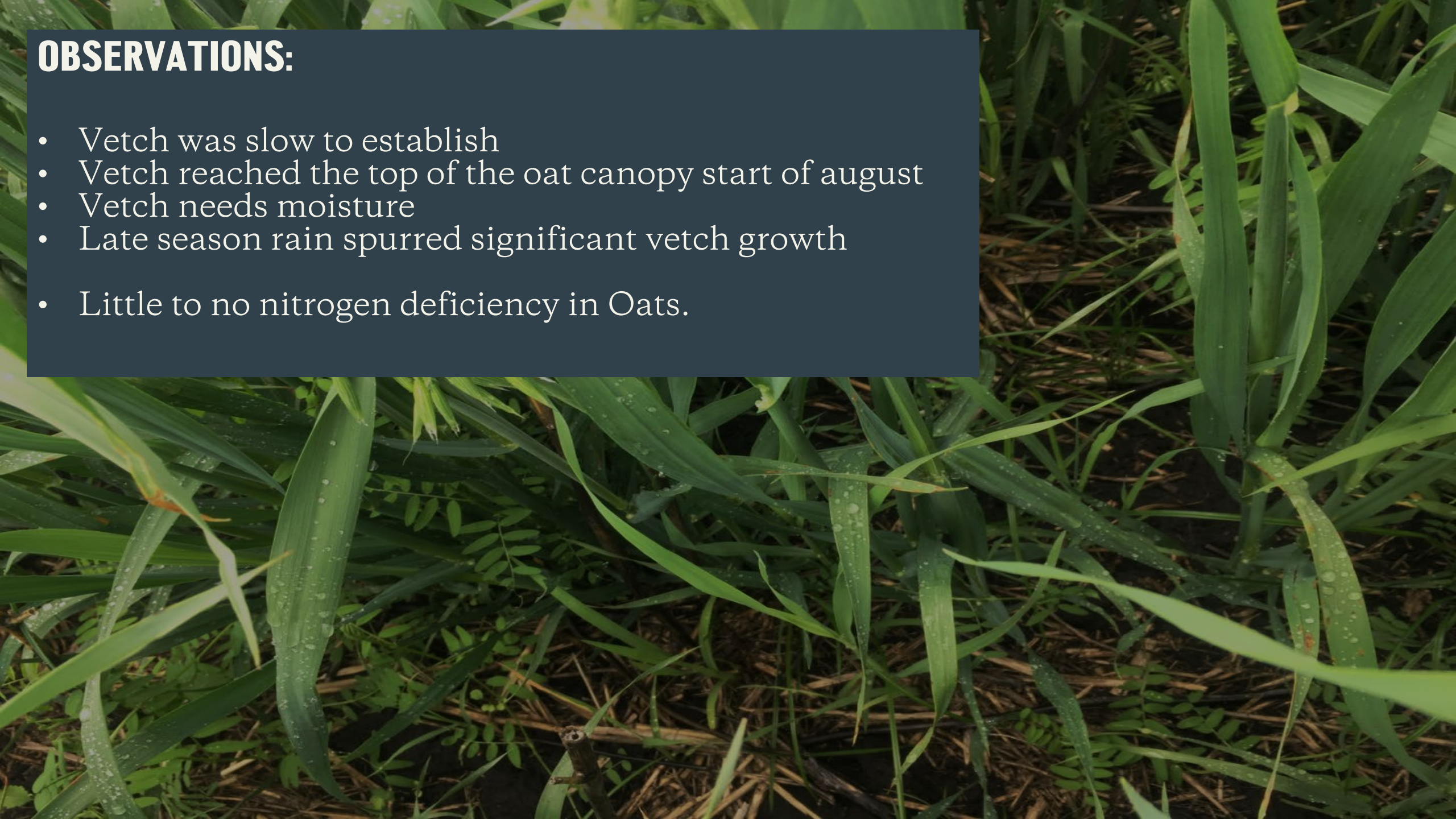
- 55 Ibs of Oats
- 12 Ibs of Hairy Vetch
- 5 Ibs of PRG

30 IBS OF NITROGEN APPLIED



OBSERVATIONS:

- Vetch was slow to establish
- Vetch reached the top of the oat canopy start of august
- Vetch needs moisture
- Late season rain spurred significant vetch growth
- Little to no nitrogen deficiency in Oats.



OBSERVATIONS:

The oats were this mature when the vetch reached the top of the canopy



COVERS & CO.

OBSERVATION

This is the ideal result.

Oats mature. Vetch & Rye Grass capturing unused sunlight & moisture.



OBSERVATION:

Late season rains made it impossible to harvest the oats and the vetch started to take over.



OBSERVATION:

The vetch made the harvest of the oats difficult but not impossible. In low spots (right picture) the vetch was thicker.



COVERS & CO.

OBSERVATION

You can see the oats had totally established before the vetch took over.



